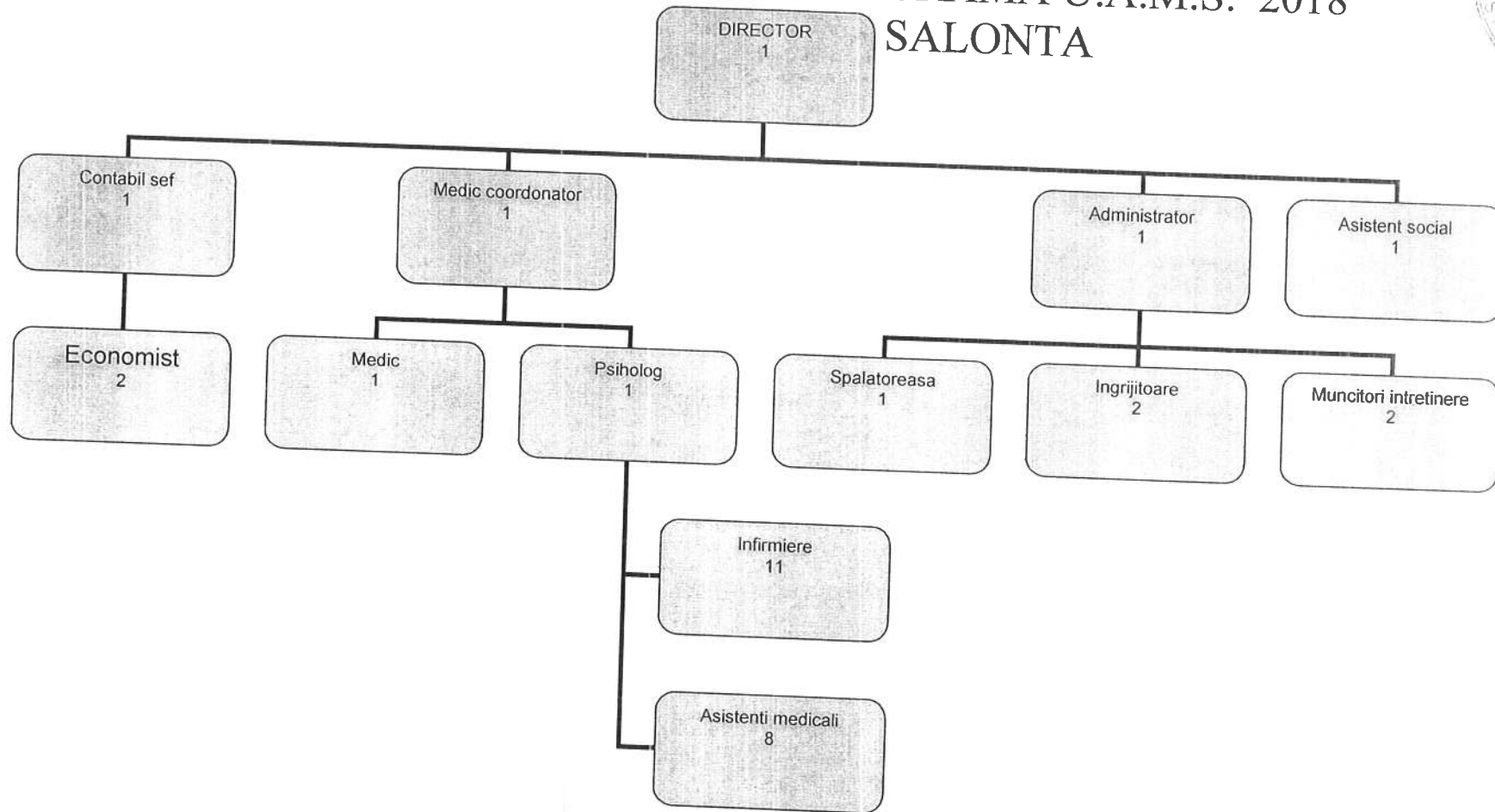




ORGANIGRAMA U.A.M.S. 2018 SALONTA



Alexa HELM.S
nr. 50/2018



UNITATEA DE ASISTENTA MEDICO-SOCIALA
SALONTA

STAT DE FUNCTII

Valabil de la data 01.01.2018

Nr. crt.	FUNCTIA	Grad profesional	Grad vechime	Nivel studii	Salar cf. Legii 153/2017	Spor cond.	Spor tura	Quantum post	Post ocupat
1	Director		5	S	3136	15%		1	0.5
2	Contabil sef		5	S	5792	15%		1	1
3	Economist	IA	5	S	4181	15%		1	1
4	Economist	IA	5	S	4181	15%		1	1
5	Administrator	I	5	M	2661	15%		1	1
6	Asistent social	Principal	3	S	3370	15%		1	1
7	Muncitor calificat	II	5	G/M	2179	15%		1	1
8	Medic	spec.med.familie	5	S	4883	15%		1	vacant
9	Medic	spec.med.familie	5	S	4883	15%		1	vacant
10	Asist.medical	Principal	5	PL	3131	15%	15%	1	1
11	Asist.medical	Principal	5	PL	3131	15%	15%	1	1
12	Asist.medical	Principal	5	PL	3131	15%	15%	1	1
13	Asist.medical	Principal	3	PL	2981	15%	15%	1	1
14	Asist.medical	Principal	3	PL	2981	15%	15%	1	1
15	Asist.medical		5	PL	2826	15%	15%	1	1
16	Asist.medical		5	PL	2826	15%	15%	1	vacant
17	Asist.nutritie si diet.		5	PL	706			1	2 ore/zi
18	Psiholog	practicant	3	S	3021	15%		1	vacant
19	Infirmiera		5	G/M	2133	15%	15%	1	1
20	Infirmiera		5	G/M	2133	15%	15%	1	1
21	Infirmiera		5	G/M	2133	15%	15%	1	1
22	Infirmiera		5	G/M	2133	15%	15%	1	1
23	Infirmiera		5	G/M	2133	15%	15%	1	1
24	Infirmiera		5	G/M	2133	15%	15%	1	1
25	Infirmiera		5	G/M	2133	15%	15%	1	1
26	Infirmiera		3	G/M	2030	15%	15%	1	1



27	Infirmiera		3	G/M	2030	15%	15%	1	1
28	Infirmiera		3	G/M	2030	15%	15%	1	1
29	Infirmiera		2	G/M	1933	15%	15%	1	1
30	Ingrijitoare		4	G/M	2050	15%		1	1
31	Ingrijitoare		4	G/M	2050	15%		1	1
32	Spalatoreasa		5	G/M	2101	15%		1	1
33	Muncitor calificat	II	5	G/M	2179	15%		1	vacant

T O T A L: 28 posturi ocupate, din care functii de conducere 2 si posturi cu studii superioare - 8

DIRECTOR
Varga Aniko



CONTABIL SEF
Fazecas Simona